

vertical filling cartoning machine

She is not afraid to transform herself. Automatic motorized easy change of format. Innovation is something suitable. Cartoning machine with vertical/top filling with pick & place for different cartons sizes. Simplify your packaging. Convert a problem into a solution. Improve productivity.

>> general features

The flexible inline top filling cartoning machine is designed to be installed downstream of the packaging lines or as an independent unit. Products grouping out of the packaging machine is done thanks to the pick & place that will accurately pick them up and place them into the open carton. Different configuration are possible inside the carton and different carton sizes can be processed. Carton's opening station is secure done with double suction system. The in feed, carton's opening and out feed stations are compact but also separable in order to ensure an easy access all around the machine. After filling, the boxes are conveyed to the outlet and the machine folds the carton flaps and closes them with tape on the two sides. (optional: closing with glue using the Hot Melt system). Finally a cartoning machine with all Automatic, motorized adjustment. Fast & simple change of format.

>> specific features

The cartoning machines top filling advantages are:

- Compact size, high speed, (up to 20 cartons/min) or more with pick and place .Motorized adjustment.
- Quick carton size change and user-friendly access to all adjustable parts.
- Mouvements on dovetail rails and re circulating ball bearings blocks.
- Plc controlled Siemens.

DOVERCO
Strategic. Packaging.

2111 32nd Avenue, Montreal, Quebec H8T 3J1
Tel: (514) 420-6060 • Fax: (514) 420-6015

250 Trowers Road, Unit 7, Vaughan, Ontario L4L 5Z6
Tel: (289) 256-2141 • Fax: (289) 256-2142

Toll Free: 1-800-363-0697 • www.doverco.ca • sales@doverco.ca

>> details



New generation case packer machine, unique. Compact, automatic, simple in the change of format and adjustments (all motorized).



Completely accessible and openable. Loading and cartoning stations are separable to allow operator entering for easy maintenance.



Pick and place for fast & accurate products picking up from the in feed transport conveyor and precise feeding of the carton with the configuration previously set.



Electric cabinet on view for an immediate diagnosis.



Simple cartons feeding. Reduced machine size. Perfect operability for the operator.



Compact case opening inline or positive 90°.



Out feed station with motorised driven belts adjustable for different carton sizes.



Siemens touch screen with different programs for easy set up.



Iso certificated high quality components.

DOM-11/2015 - rettangolare.it

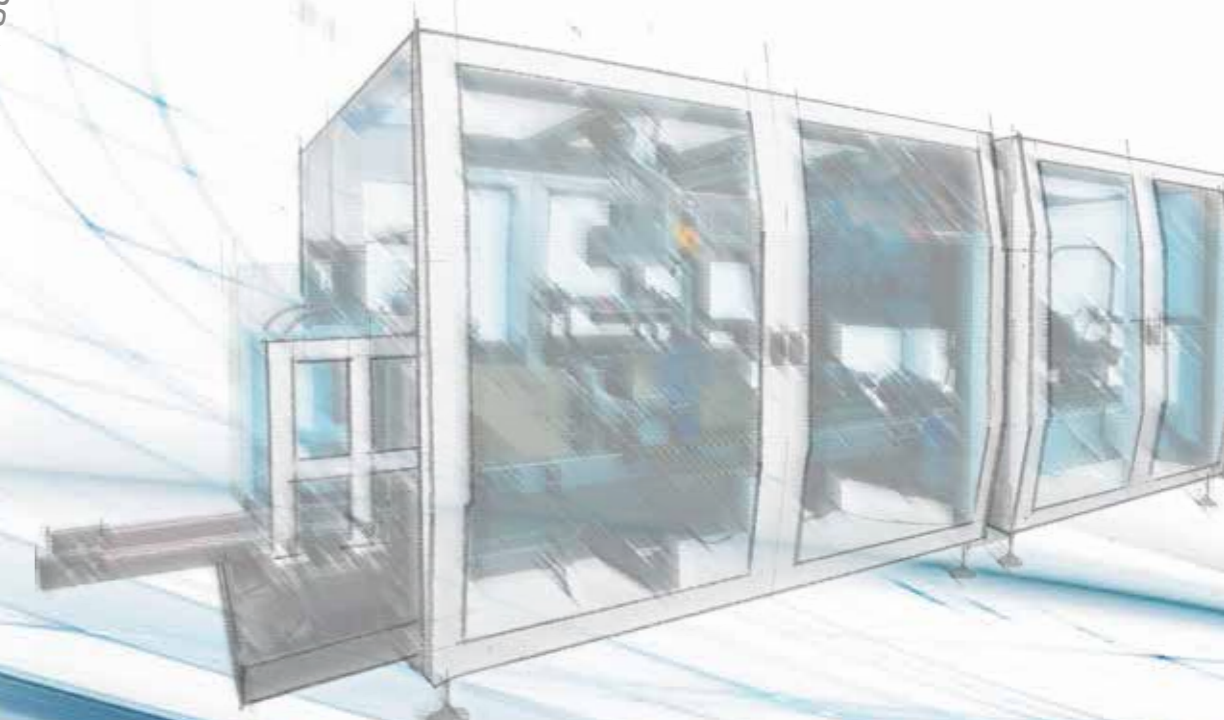
PREFERRED PACKAGING ITALY
leader in the manufacturing packaging equipment

**DM
PACK**

GD pack

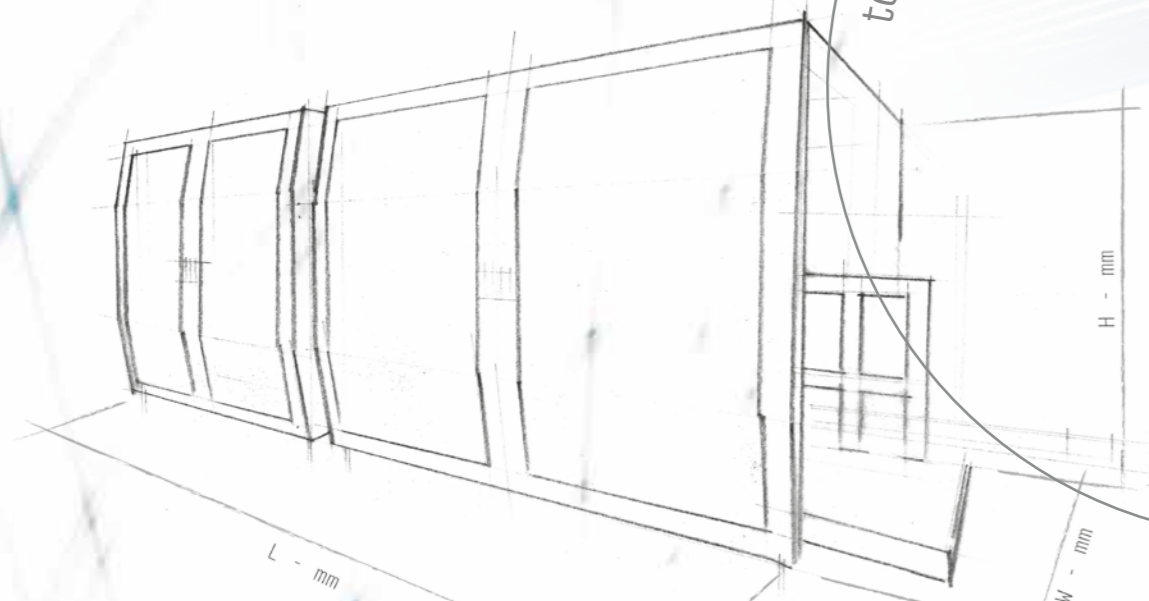
>> **DOM**

top load case packer



GB

DOM



>> technical features

Machine dimensions LxWxH	3300x2750x1850 mm
Minimum carton size LxWxH	150x150x150 mm
Maximum carton size LxWxH	600x400x600 mm
Weight	900 Kg
Speed	20 cartons/min with cartons opening mode; with pick & place speed depends from the products type

>> Siemens touch screen with different products & cartons set up.

>> Totally automatic. Adjustments and change of format as per "recipe". The machine automatically adjust itself: carton's opening and pick & place movement as well.

>> Pick & place has a single belt with two servo brushless motors for faster movements & better axes interpolation.

>> Tape applicator.

>> Compact & solid structure, accessible. All adjustments motorized.

>> In feed and carton erector station are separable and openable for easy accessibility.